



**ASHLAND
COMMUNITY
HOSPITAL**

**FOUNDATION
INSPIRING
PHILANTHROPY
TO ENHANCE
ASANTE
ASHLAND
COMMUNITY
HOSPITAL
SERVICES**

P.O. BOX 98
ASHLAND, OR 97520
(541) 201-4015

ACHFOUNDATION.ORG

STAFF

JANET TROY, CFRE
EXECUTIVE DIRECTOR

STEPHANIE ROLAND, CFRE
SENIOR DEVELOPMENT OFFICER

KATHLEEN MACKRIS
DEVELOPMENT OFFICER

BOARD OF DIRECTORS

JOY DOBSON WAY, RN (ret.)
PRESIDENT

LIZ MURPHY
PAST PRESIDENT

ED COLSON
TREASURER

MARJORIE LININGER
SECRETARY

KAREN AMAROTICO
KAREN DRESCHER
TRICIA HAHN
ERIC HERRON
LAUREL KIICHLI
SHARON LASKOS
RICK NAGEL
RAND ROSELLI
JANE STROMBERG

EMERITUS BOARD

BRIAN ALMQUIST
DICK BERNARD
CHUCK BUTLER
JACK DAVIS
KURT KNUDSEN
JED MEESE
MARJORIE O'HARRA
STEPHEN RENO
MAGGIE SKERRY

EX-OFFICIO

SHEILA CLOUGH
AACH CEO



INSPIRATIONS

AN UPDATE FROM ASHLAND
COMMUNITY HOSPITAL
FOUNDATION

Issue #8
Fall 2017

Celebrating Our 40th Anniversary

Continuing our History of Helping

Through 40 years, the Ashland Community Hospital Foundation has remained committed to Ashland's hometown hospital, linking generous community members and the hospital's needs.



Pat Flannery

"For the future of the hospital, it was important to have a strong foundation fundraising for the hospital," said Pat Flannery, who was hired as the first full-time development director in 1990.

During his tenure, the foundation's assets grew dramatically when Bill and Florence Schneider donated land in 1991 for the development of a senior living center near the hospital, and the foundation obtained land to develop medical offices. 2002 brought several large gifts: Cora Nixon's bequest to the popular Lights for Life campaign, and the creation of The William G. and Ruth T. Evans Endowed Nursing Scholarship.

Flannery, who retired in 2007, credits the steady gains the foundation made during the 1990s and early 2000s to "an incredible board."

In 2011, the foundation launched the first Employee Campaign to harness the generosity of those on the frontlines of health care.

As small independent hospitals nationwide struggled, the Ashland Community Hospital board sought to join a larger hospital system to remain viable.

"As a foundation, we need to be supportive of the hospital board and we wanted to maintain our independence and ensure the money we had raised supported Ashland Community Hospital," said Sandra Slattery, the foundation board president and member of the negotiation team during the merger with Asante Health System in August 2013.



Sandra Slattery

In recent years the foundation has invested in telemedicine technology, digital mammography equipment, and a Women's Health Initiative. It has helped renovate patient rooms, waiting areas, the Emergency Department and the Family Birth Center, and provided funding for a chapel.

Asante Ashland Community Hospital CEO Sheila Clough notes that donors help move a quality organization to the next level. "Over the years, the Ashland Community Hospital Foundation has done just that for Asante Ashland and has touched every corner of our hospital operations," she explained.

"That doesn't change as we go into the future. We will still need our friends and support from the foundation as we work on projects to transform the way we deliver health care in our community. We know we have a great partner in our foundation."

Explore our history: See what the Foundation and donors like you have achieved over the past 40 years on an interactive timeline at achfoundation.org/about-us/our-history/.



Message from the President

You Have the Power to Transform

Our 40th year as a foundation has been an exciting opportunity to celebrate our history and the people who have made the past four decades memorable. Over these years, thousands of people just like you have opened their hearts and contributed time, talent, and treasure to help build and sustain our community hospital.



Asante Ashland Community Hospital has been an important institution in Ashland, and our region, for more than 110 years. Throughout our history, the community has come together to support our mission "to provide quality healthcare services in a compassionate manner..." Your charitable gifts have come in many sizes and shapes, benefited every department and program, and have truly helped save lives.

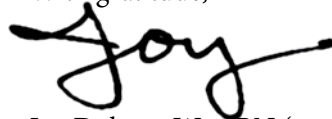
One important way many members of our foundation family have chosen to express their gratitude and generosity is by including our foundation in their estate plans. I was impressed to learn we have received close to \$3.4 million in estate gifts to date, plus additional dollars received each year from interest through trusts and endowments.

Estate gifts have touched every corner of our hospital and supported the extension of needed services into the community. These gifts help purchase new life-saving equipment, renovate facilities, contribute seed money for state-of-the-art and innovative programs, fund school nursing, and provide nursing scholarships. In addition, these gifts build the foundation's endowments to provide ongoing support for years to come.

Without a doubt, your estate gift has the power to transform. When you choose to include us in your future plans, you have the ability to personally change our hospital, a department, or even a life. First and foremost, your gift provides a lasting legacy that celebrates your generosity and concern for others. For many people, their estate gift is the most meaningful charitable gift of their lifetime!

Remembering your favorite charities through a bequest or beneficiary designation is easy. I hope you will consider including Ashland Community Hospital Foundation in your estate plans. Please contact Janet Troy at 541-201-4014 to learn more about how you can make a difference. It's never too early, or too late, to harness your power to transform!

With gratitude,

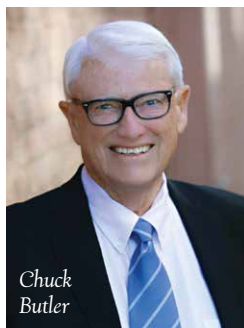


Joy Dobson Way, RN (ret.), MSN
President, Ashland Community Hospital Foundation

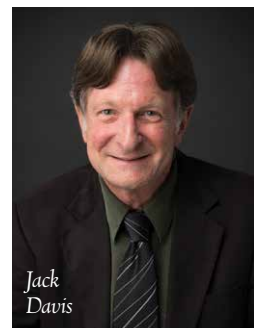
Emeritus Board Members Added

The Ashland Community Hospital Foundation is pleased to welcome two new emeritus board members to its board of directors. Members unanimously supported the addition of Jack Davis and Chuck Butler to the list of esteemed members who have served with distinction through the foundation's history.

Chuck Butler, a co-founder and co-owner of Butler Automotive Group, first joined the foundation's board of directors in 1989. He served until 1998 and again from 2007 to 2012. In 1991, during his term as board president, he helped secure the donation of six acres of land near the hospital to develop a senior residential facility that provided housing and care for seniors and a steady source of revenue for the foundation. Chuck received the Distinguished Service Award in 1994 and continues to support the foundation in many ways, including inviting the foundation to participate in Ford's Drive 4 UR Community in 2015 and selecting it to receive a donation in his honor when he was awarded the prestigious 2017 TIME Magazine/Ally Financial Quality Dealer of the Year Award for his career in the automotive industry and his work in the community.



Jack Davis, a partner at Davis, Hearn, Anderson & Turner Attorneys at Law, began his service to the foundation in 2009 when he joined the board of directors and served for six years. During that time and continuing to this day, Jack has provided pro bono legal services to the foundation. While on the board, he served on the real estate, governance, asset management and executive committees, and he helped negotiate a lease with the senior living facility on the donated land near the hospital. Jack also was actively involved during the hospital's affiliation process with the Asante Health System in 2013 and helped negotiate a partnership that has kept the hospital a thriving part of the community. Jack was honored as the 2015 Distinguished Service Award recipient.



Ruth Evans' Legacy Continues Endowed Nursing Scholarship Helps More Students Each Year

Now in its 15th year, The William G. and Ruth T. Evans Endowed Nursing Scholarship continues to expand its support of nursing students who plan to work in the Rogue Valley. This year, a record-breaking 16 students enrolled in the Oregon Health Science University nursing program at Southern Oregon University and Rogue Community College received scholarships totaling \$93,000 — the largest award in the history of the scholarship. Additionally, another 16 students graduating from the Rogue Community College Practical Nursing program received scholarships totaling \$6,936 to cover the cost of their state application and exam fees.

Ruth Evans, herself a nurse, created the scholarship in 2002, shortly after the death of her husband, Dr. William Evans, a family physician. She had seen a shortage of nurses in the Rogue Valley and knew that these caring professionals would only be more important in the future. Upon her death in 2013, she left a \$2.5 million bequest to the Ashland Community Hospital Foundation to support the scholarship and other health care programs she valued. Since 2002, 161 students have received 209 scholarships valued at more than \$451,500.



Please join us in congratulating our 2017-18 Evans Scholarship Recipients

Back row, L to R: Luis Ayala Rangel, Tiffany Stone, Jonathan Caringella, Zachary Phillips, Bruce Booker, Michelle Benitez, Amber Wolf

Front row, L to R: Katherine Carlson, Connie Koenig, Makena Totushek, Mary Krishna Phoebe Blanco, Brittany Jones, Lindsay McCreedy

Not pictured: Summer Kniveton, Isaac Park, Alison Wren

Leave a Lasting Gift: You can invest in the future of the community and its hospital with an endowment, bequest or other form of estate gift. Call Janet Troy at 541-201-4014 to learn more about these opportunities.



Circle Of Caring Helps Donors Pass On Their Appreciation Couple Honors Team That Helped Them Welcome Their Daughter

Supporting Asante Ashland Community Hospital is something of a family tradition for Alexi and Jeff McCullough, so donating to recognize the outstanding care they received when their daughter Abigail was born was a natural choice. The McCulloughs turned to the Ashland Community Hospital Foundation's Circle of Caring program, which enables donors to show gratitude to a caregiver, team or department with a gift that supports the hospital.

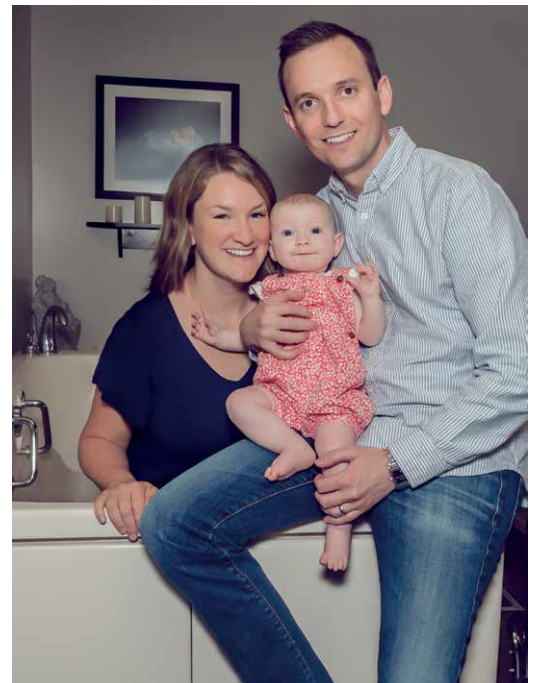
"The caregivers we met were like family," said Alexi, whose parents Linda and Chuck Butler have served on the boards of the hospital and the foundation. She and Jeff had contributed to the foundation's recent campaign to update the Ashland Family Birth Center and add

another waterbirth room and shower.

"When it came time to bring our first baby into the world, we knew it would be here with these great new facilities and such a nurturing staff," Alexi said, noting that friends giving birth in major cities haven't found the balance of medical technology and personal care that she, Abigail, and Jeff received at Ashland Family Birth Center.

"It's the people who make or break an experience," Alexi said, praising the Reiki healer, doula, nurses and Dr. Leslie Stone.

"We're so fortunate," Jeff said. "We felt like we wanted to give back for our friends and family and for us to use the birth center again."



Join the Circle: You can recognize a special caregiver with a tax-deductible contribution that will support the hospital's work. Donate online at achfoundation.org or call (541) 201-4015.

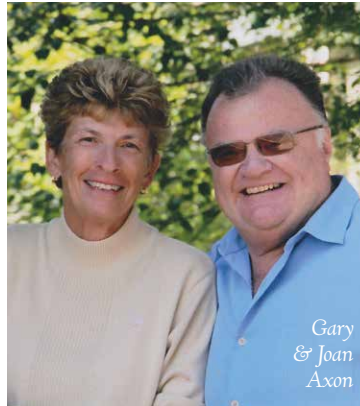


Lights for Life Gifts Reflect Good in the Community

Axons Have Given Annually for 30 Years

Every year for three decades, Gary and Joan Axon have contributed to Lights for Life, Ashland Community Hospital Foundation's annual holiday fundraiser that illuminates trees in Ashland and Talent and enables donors to commemorate special people or events in their lives while benefiting the hospital.

"It's a good idea to honor people we admire and respect while supporting the hospital and the excellent care it provides," Gary said.



When the program launched in 1987, the Axons thought it looked like a worthy cause. Over the years, they have given in memory of family members, in honor of respected community members and in gratitude for attentive care at the hospital.

When Dr. Aubrey Hill — who had served as their family physician for 30 years — retired, they marked the milestone with a Lights for Life gift in his honor.

"He called and said it was one of the nicest things anyone did for him." Gary said.

When both their sons landed in the emergency room on the same evening after mishaps during one particularly rough Ashland High School football game in the late '80s, that year's gift was in honor of the Emergency Department team who provided excellent care for what turned out to be minor injuries.

"It's not necessarily the size of the gift, but by donating for so many years, we've been able to do some small thing for the hospital and the foundation," Joan said, noting that last year's gift was to thank the Emergency Department for treating her after a fall.

"We believe the hospital is essential to the vitality and wellbeing of the Ashland community," Gary said.

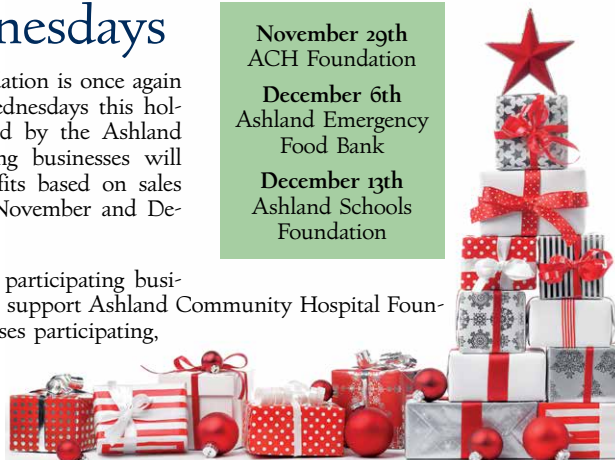
If you agree, join Gary and Joan in making a Lights for Life donation an annual tradition. Your tax-deductible gift will be symbolized with a light on a community tree in Ashland and in Talent, and you can submit a photo or story for a tribute ornament on a tree in the west lobby of Asante Ashland Community Hospital. Those honored will receive a Lights for Life holiday card. Your name and the names of those you choose to honor will be recognized in the Ashland Daily Tidings and Medford Mail Tribune in December, and the Ashland Sneak Preview and Talent News & Review in January, unless you choose to be anonymous.

Give Back Wednesdays

Ashland Community Hospital Foundation is once again a grateful recipient of Give Back Wednesdays this holiday season, an initiative coordinated by the Ashland Chamber of Commerce. Participating businesses will make contributions to local nonprofits based on sales or profits on three Wednesdays in November and December.

Shop local this holiday season with participating businesses on Give Back Wednesdays and support Ashland Community Hospital Foundation. For a complete list of businesses participating, visit ashlandchamber.com/liveloal. A full list of participants will be available on November 15th.

- November 29th
ACH Foundation
- December 6th
Ashland Emergency Food Bank
- December 13th
Ashland Schools Foundation



Lights for Life Community Partners

Shining Lights for Life for All to See



Ashland Service Clubs:
Kiwanis Club of Ashland
Soroptimist International of Ashland

Brandt Cullen, DDS

Robby & Danette Harfst,
Harfst & Associates

Bob & Lynn Mayers (2)

Retina & Vitreous Center
of So. Oregon

William S. Rodden, MD
Christine Gonzales, MD
John D. Hyatt, MD

If you would like to join in this special celebration of life, and are interested in additional recognition opportunities please consider giving as a Lights for Life Community Partner. For more information, please call Stephanie Roland at (541) 201-4019.

